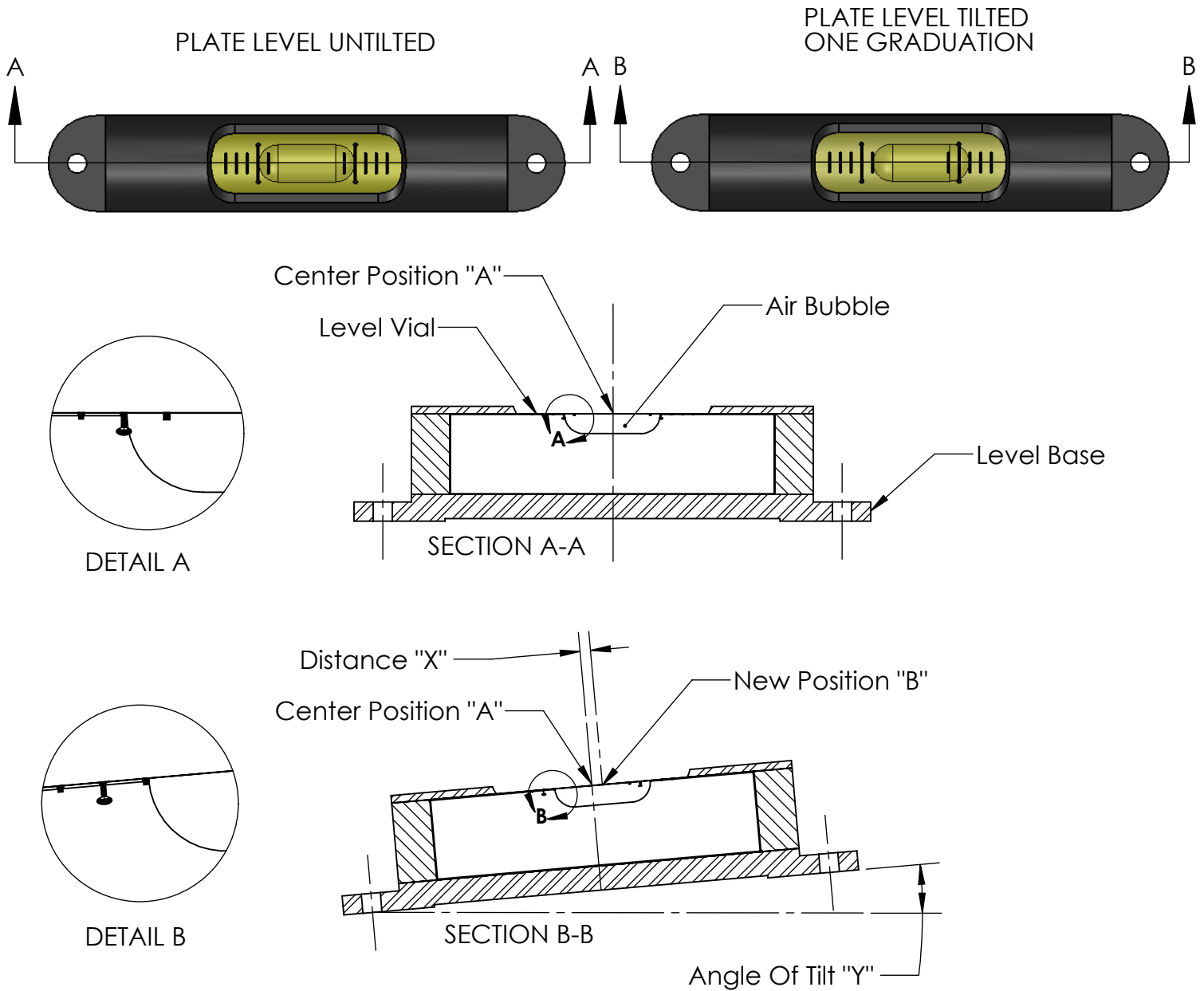


Sensitivity - Tubular Levels



- NOTES:** (1) When the level is tilted through an angle "Y", the bubble will move from center position "A" to a new position "B" through a distance "X".
- (2) Sensitivity is defined as the angle of tilt "Y" in degrees, minutes or seconds required to move the bubble a distance "X" (one graduation).
- (3) In the level industry, "X" is usually a distance of 0.1 inch or 2 millimeters per graduation. However, "X" can also be other distances, e.g. 0.05 inch, 0.06 inch, 3 mm, etc.