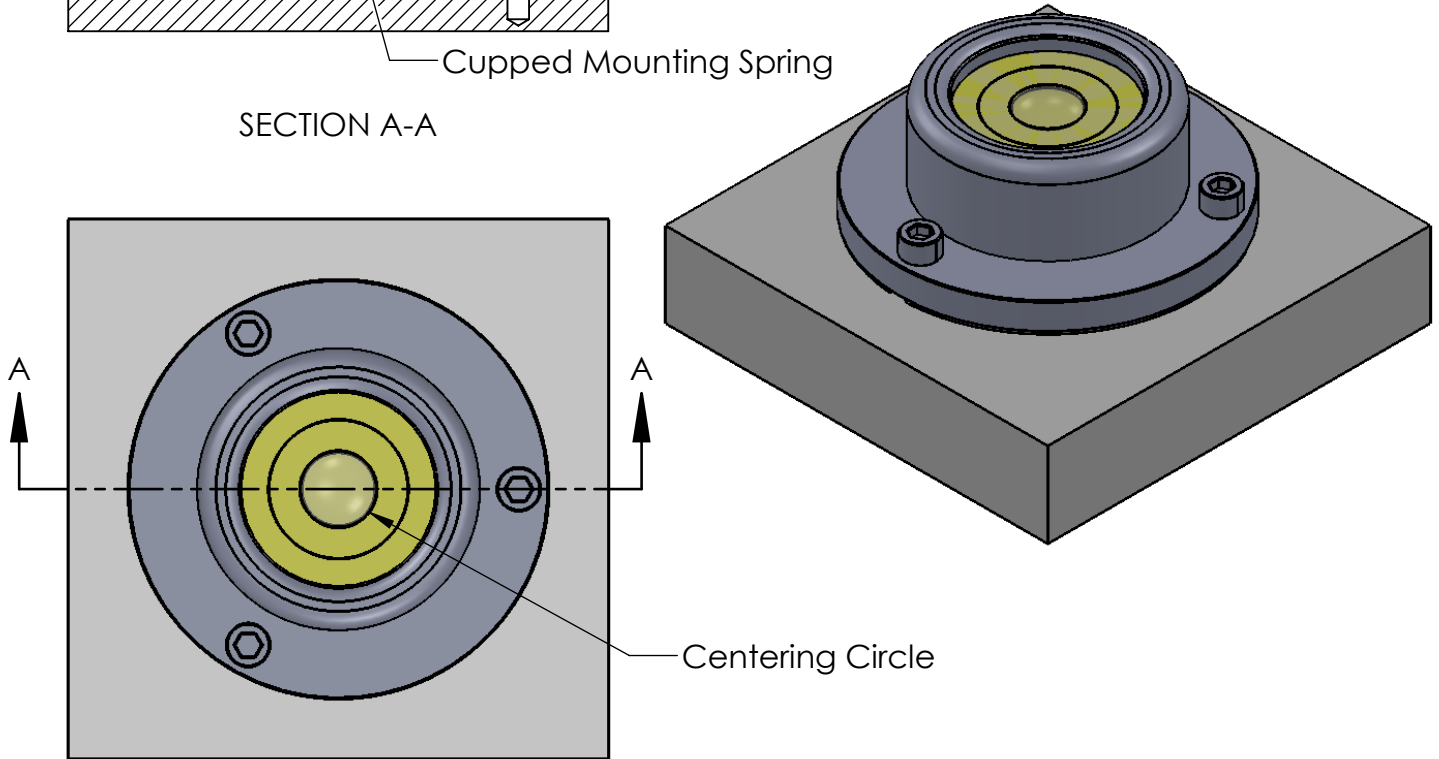
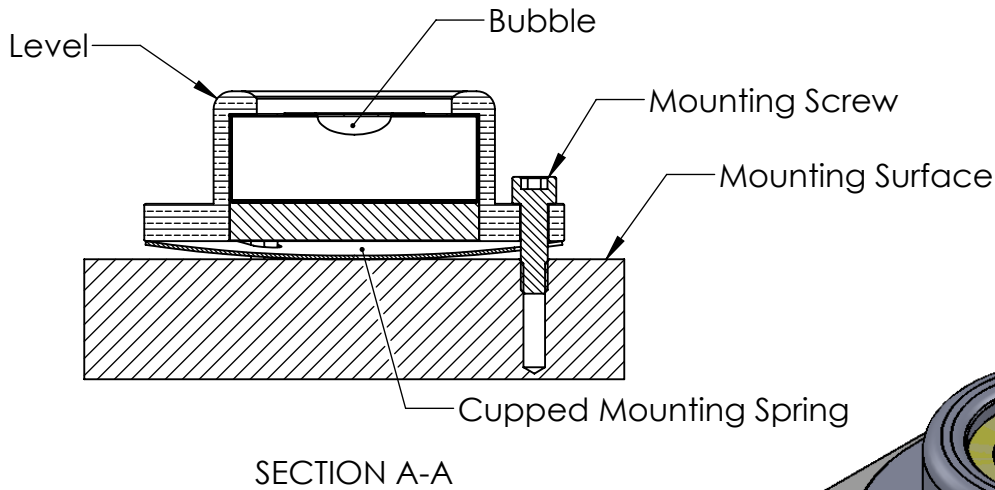


# Mounting Instructions - Circular Level Using A Mounting Spring



1. Please read instructions completely prior to installing the level.
2. The mounting surface should be relatively flat.
3. The mounting surface should have three tapped holes 120° apart.
4. Position the piece of equipment on to which the level is to be mounted in a level position with respect to the horizontal plane.
5. Attach the level and spring to the mounting surface using three screws as shown above.
6. Be sure to tighten the screws evenly to avoid damaging the level.
7. Adjust the level into the level position by tightening or loosening screws until the bubble is in the center of the centering circle.
8. To insure the level does not move due to loose mounting screws, apply a thread locking material to the screws. Use a non-permanent thread locking material if you wish to remove and/or replace the level at a later date.