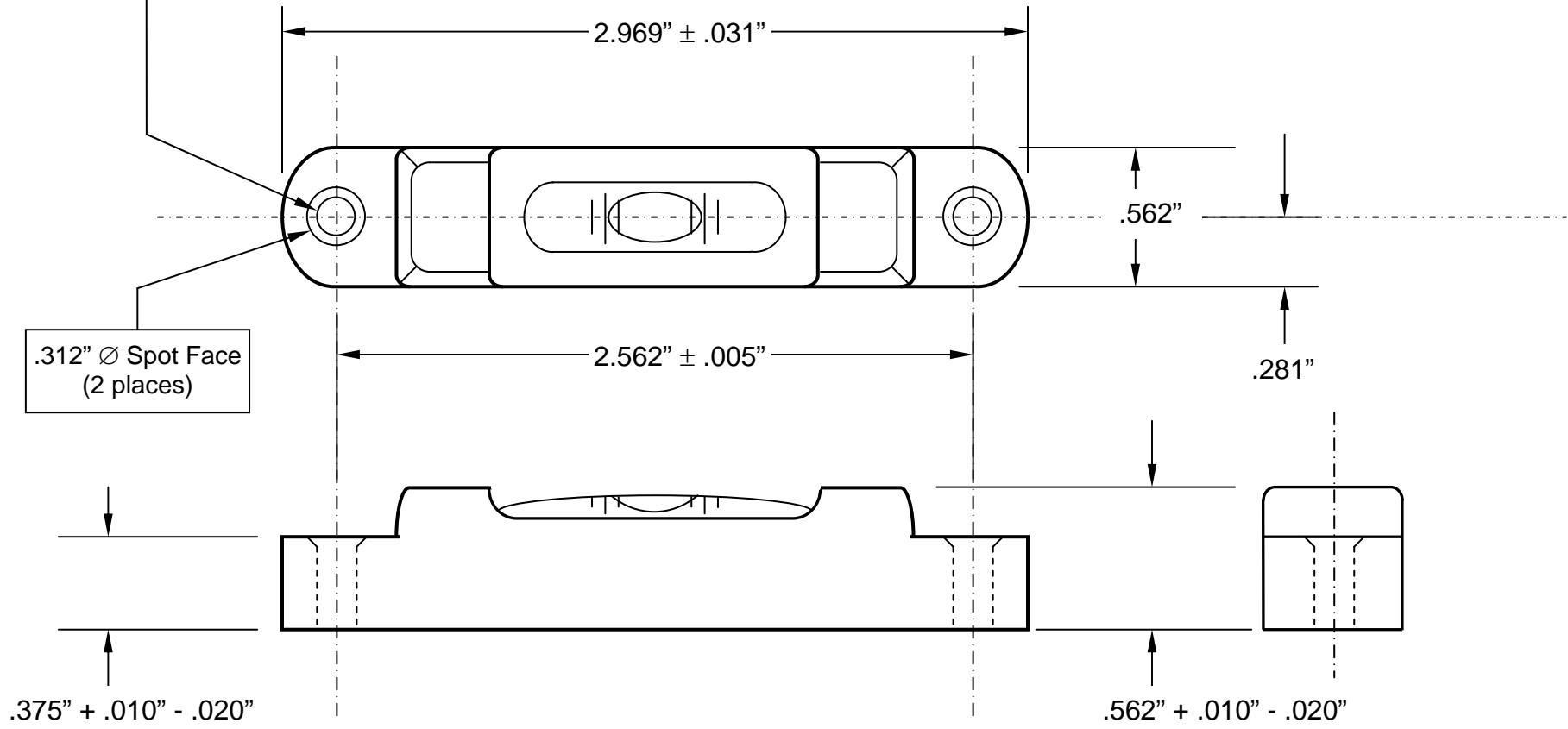


| NOTES:  | SYMBOL | REVISION REQUIRED              | DATE      | AUTH.  |
|---|--------|--------------------------------|-----------|--------|
| 1. Sensitivity: 9.5 minutes per Division (.050"), Tolerance: $\pm 2$ min. | A      | Redrawn                        | 3/30/2004 | D.B.O. |
| 2. All dimensions are in inches.  | B      | Added Spot Face                | 2/5/2008  | D.B.O. |
|   | C      | Finish was Black Lacquer Paint | 3/11/2011 | D.B.O. |
|   |        |                                |           |        |

.156"  $\pm$  .005"  $\varnothing$  Thru  
(2 places)

.312"  $\varnothing$  Spot Face  
(2 places)



|   |  |  |                       |                      |
|---|--|--|-----------------------|----------------------|
| <b>GEIER &amp; BLUHM, INC.</b><br>A division of HJM Precision, Inc.<br>594 River Street<br>Troy, New York 12180<br>U.S.A. | <b>TOLERANCES:</b><br>( Except as noted )<br>Decimal: $\pm$ .010"<br>Fractional: $\pm$ 1/64"<br>Angular : $\pm$ 1/2 degree | <b>FINISH:</b> Black Anodizing                                       | DRAWN BY: DAVID OSTER | DATE: April 26, 1963 |
|   |  | <b>MATERIAL:</b><br>Housing: Aluminum<br>Vial: Glass<br>Fluid: Clear | <b>SCALE:</b> NONE    | DRAWING NUMBER       |
| <b>PLATE LEVEL</b>  |  |  | <b>4-2003</b>         |                      |