

SYMBOL	REVISION REQUIRED	DATE	AUTH.
A	Redrawn, Revised Notes, Part No. was 2-6001	5/27/2005	D.B.O.

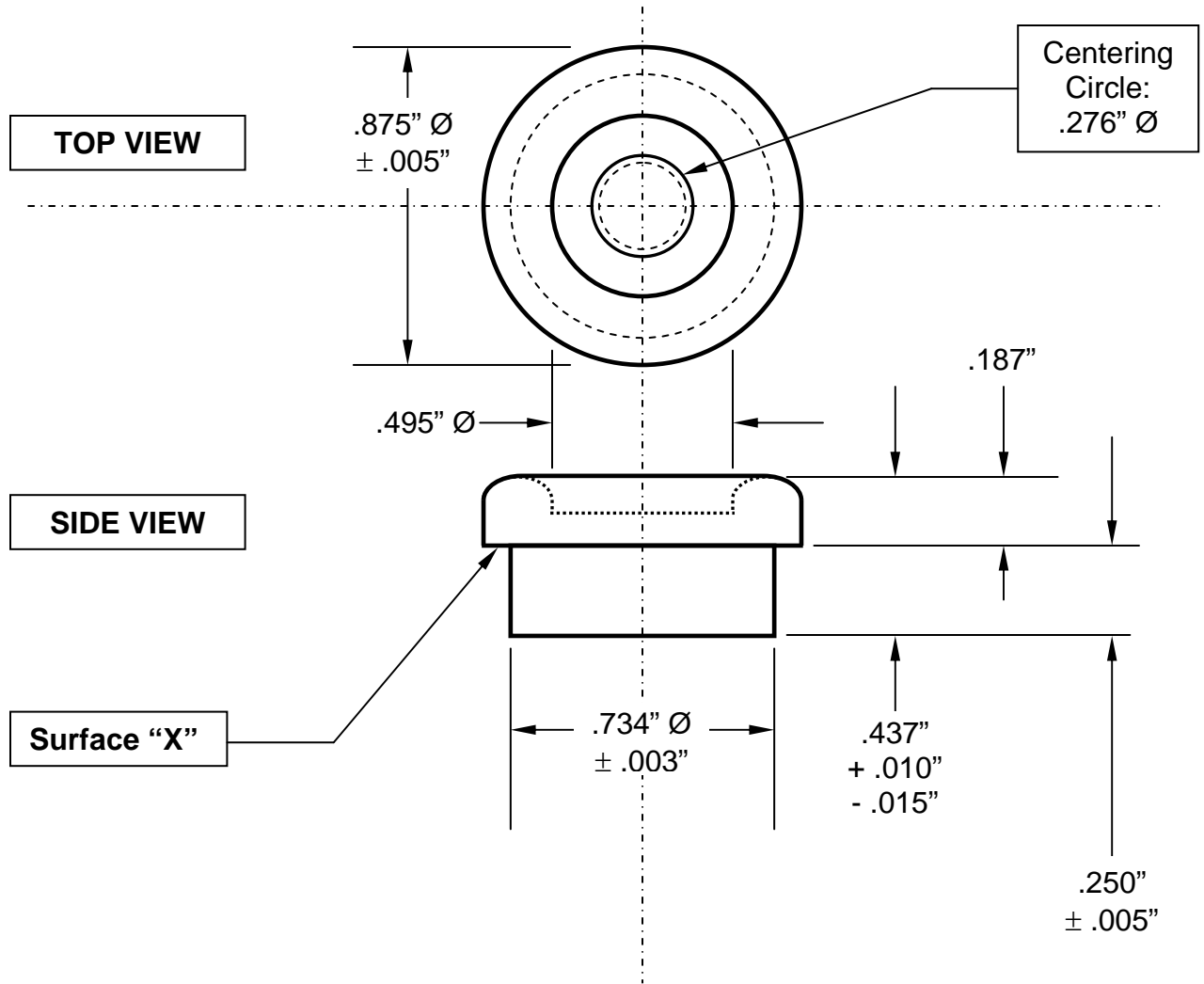
Notes:

1. All dimensions in inches.
2. SENSITIVITY: 130 minutes per 0.1" movement of the bubble. Tolerance on sensitivity is $\pm 10\%$.
3. Surface "X" is the level reference surface to which the level is calibrated.

MATERIAL: Housing: Brass
Vial: Glass

FLUID: Clear Mineral Spirits

FINISH on Housing:
Black Lacquer Paint



Tolerances: (except as noted) Decimal $\pm .010"$ Fractional $\pm 1/64"$ Angular $\pm 1^\circ$

GEIER & BLUHM, INC. 594 River Street Troy, NY 12180 USA	DRAWN BY: DAVID OSTER	DATE: June 16, 1982
	Scale: NONE	DRAWING NUMBER
	MOUNTED CIRCULAR LEVEL	2-06001